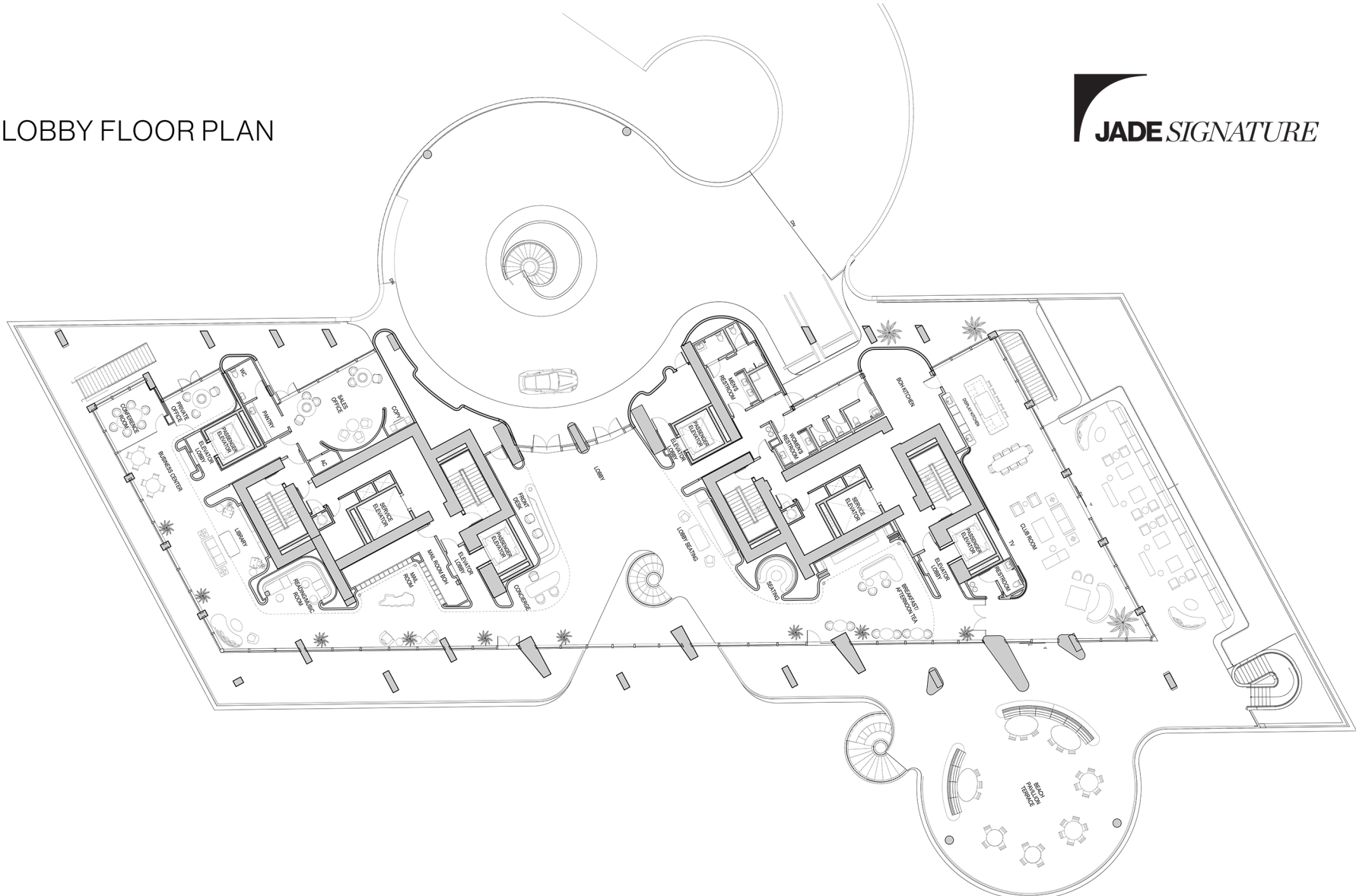


BEACH LEVEL

JADE SIGNATURE

[illegible]

LOBBY FLOOR PLAN

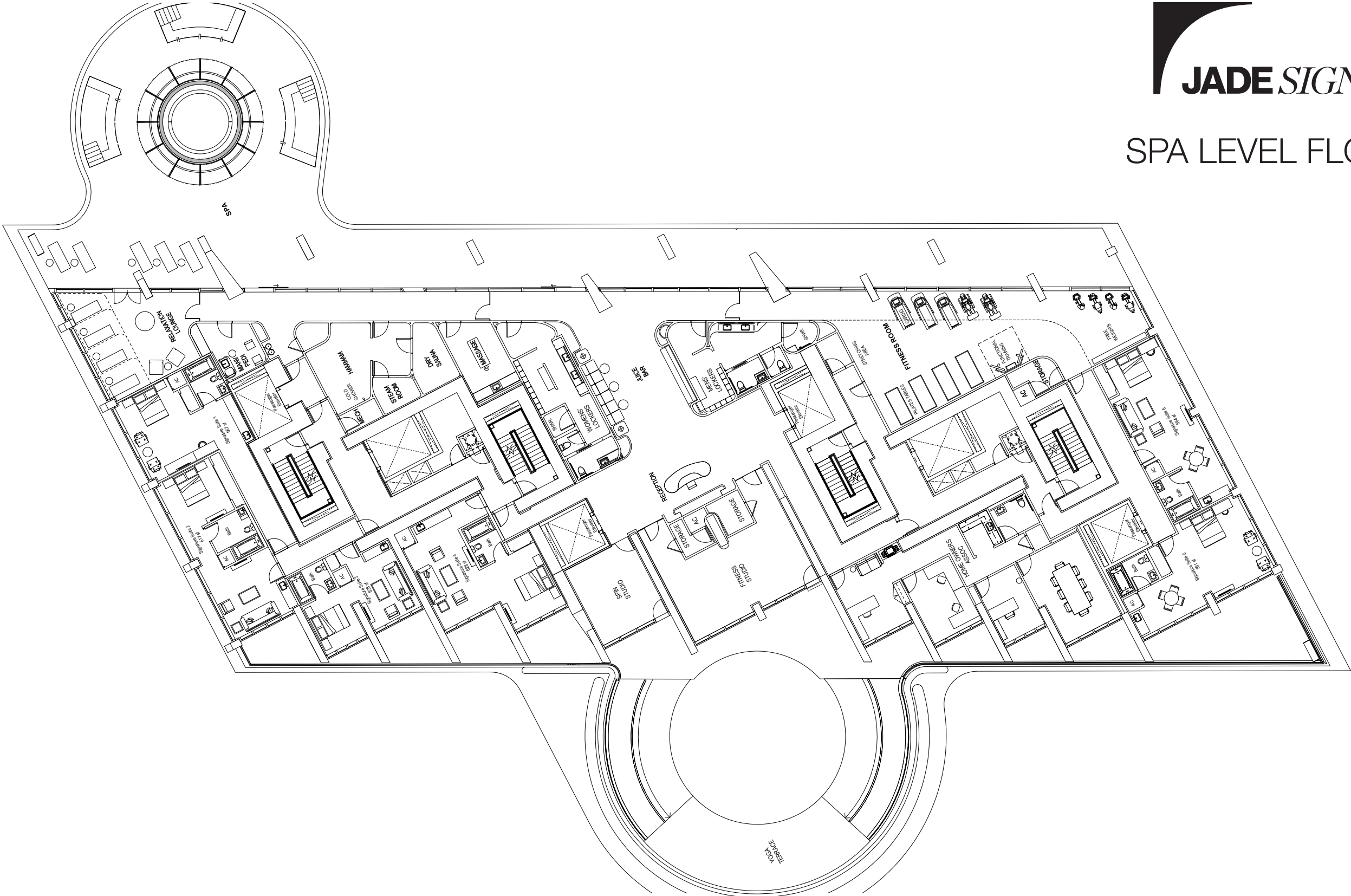


STATED DIMENSIONS ARE MEASURED TO THE EXTERIOR BOUNDARIES OF THE EXTERIOR WALLS AND STRUCTURAL MEMBERS AND THE CENTERLINE OF INTERIOR DEMISING WALLS AND INFRACT MAY VARY FROM THE DIMENSIONS THAT WOULD BE DETERMINED BY USING THE DESCRIPTION AND DEFINITION OF THE "UNIT" SET FORTH IN THE DECLARATION WHICH GENERALLY ONLY INCLUDES THE INTERIOR AIRSPACE BETWEEN THE PERIMETER WALLS AND EXCLUDES INTERIOR STRUCTURAL COMPONENTS. ALL DIMENSIONS ARE APPROXIMATE, ARE SUBJECT TO FINAL SURVEY AND MAY VARY WITH ACTUAL CONSTRUCTION. THE FLOOR PLAN DEVELOPMENT PLANS AND THE ENTITIES COLLABORATING WITH DEVELOPER ARE SUBJECT TO CHANGE. RESIDENCE FEATURES AND BUILDING AMENITIES HEREIN ARE PROPOSED ONLY AND DEVELOPER RESERVES THE RIGHT TO MODIFY, REVISE, CHANGE OR WITHDRAW ANY OR ALL OF SAME IN ITS SOLE AND ABSOLUTE DISCRETION AND WITHOUT PRIOR NOTICE. ALL DEPICTIONS OF FURNISHINGS, FINISHES, APPLIANCES, COUNTERTOPS, SCAFFOLDS, FLOOR COVERINGS AND OTHER MATTERS OF DETAIL, INCLUDING WITHOUT LIMITATION ITEMS OF FINISH AND DECORATION ARE CONCEPTUAL ONLY AND ARE NOT NECESSARILY INCLUDED IN EACH UNIT. CONSULT YOUR AGREEMENT AND THE PROSPECTUS FOR THE ITEMS INCLUDED WITH THE UNIT. THE BALCONY DEPICTED IS THE STANDARD BALCONY ALTHOUGH THE BALCONY SIZE AND CONFIGURATION VARIES AT EVERY LEVEL. FOR A DEPICTION OF THE BALCONY FOR YOUR UNIT SEE EXHIBIT 2 TO THE DECLARATION. FORTUNE INTERNATIONAL GROUP IS NOT THE DEVELOPER. THE CONDOMINIUM IS BEING DEVELOPED BY SUNNY ISLES BEACH ASSOCIATES, LLC WHICH HAS A LIMITED RIGHT TO USE THE TRADEMARKED NAME AND LOGO OF FORTUNE INTERNATIONAL GROUP. ORAL REPRESENTATIONS CANNOT BE RELIED UPON AS CORRECTLY STATING REPRESENTATIONS OF THE DEVELOPER. FOR CORRECT REPRESENTATIONS, MAKE REFERENCE TO THE DOCUMENTS REQUIRED BY SECTION 718.305, FLORIDA STATUTES, TO BE FURNISHED BY A DEVELOPER TO A BUYER OR LESSEE. ARCHITECT OF RECORD - ADD INC.



JADE SIGNATURE

SPA LEVEL FLOOR PLAN



STATED DIMENSIONS ARE MEASURED TO THE EXTERIOR BOUNDARIES OF THE EXTERIOR WALLS AND STRUCTURAL MEMBERS AND THE CENTERLINE OF INTERIOR DEMISING WALLS AND, IN FACT, MAY VARY FROM THE DIMENSIONS THAT WOULD BE DETERMINED BY USING THE DESCRIPTION AND DEFINITION OF THE "UNIT" SET FORTH IN THE DECLARATION (WHICH GENERALLY ONLY INCLUDES THE INTERIOR AIRSPACE BETWEEN THE PERIMETER WALLS AND EXCLUDES INTERIOR STRUCTURAL COMPONENTS). ALL DIMENSIONS ARE APPROXIMATE, ARE SUBJECT TO FINAL SURVEY AND MAY VARY WITH ACTUAL CONSTRUCTION. THE FLOOR PLAN, DEVELOPMENT PLANS AND THE ENTITIES COLLABORATING WITH DEVELOPER ARE SUBJECT TO CHANGE. RESIDENCE FEATURES AND BUILDING AMENITIES HEREIN ARE PROPOSED ONLY, AND DEVELOPER RESERVES THE RIGHT TO MODIFY, REVISE, CHANGE OR WITHDRAW ANY OR ALL OF SAME IN ITS SOLE AND ABSOLUTE DISCRETION AND WITHOUT PRIOR NOTICE. ALL DEPICTIONS OF FURNISHINGS, FINISHES, APPLIANCES, COUNTERS, SOFFITS, FLOOR COVERINGS AND OTHER MATTERS OF DETAIL, INCLUDING, WITHOUT LIMITATION, ITEMS OF FINISH AND DECORATION, ARE CONCEPTUAL ONLY AND ARE NOT NECESSARILY INCLUDED IN EACH UNIT. CONSULT YOUR AGREEMENT AND THE PROSPECTUS FOR THE ITEMS INCLUDED WITH THE UNIT. THE BALCONY DEPICTED IS THE STANDARD BALCONY ALTHOUGH THE BALCONY SIZE AND CONFIGURATION VARIES AT EVERY LEVEL. FOR A DEPICTION OF THE BALCONY FOR YOUR UNIT SEE EXHIBIT 2 TO THE DECLARATION. FORTUNE INTERNATIONAL GROUP IS NOT THE DEVELOPER. THE CONDOMINIUM IS BEING DEVELOPED BY SUNNY ISLES BEACH ASSOCIATES, LLC, WHICH HAS A LIMITED RIGHT TO USE THE TRADEMARKED NAME AND LOGO OF FORTUNE INTERNATIONAL GROUP. ORAL REPRESENTATIONS CANNOT BE RELIED UPON AS CORRECTLY STATING REPRESENTATIONS OF THE DEVELOPER. FOR CORRECT REPRESENTATIONS, MAKE REFERENCE TO THE DOCUMENTS REQUIRED BY SECTION 718.305, FLORIDA STATUTES, TO BE FURNISHED BY A DEVELOPER TO A BUYER OR LESSEE. ARCHITECT OF RECORD - ADD INC.